



**DuraPlan**  
— SYSTEMS LTD —

13mm Compact Laminate

---

**Stocked  
Colour Range**

---

09 972 7682  
sales@duraplan.co.nz  
www.duraplan.co.nz

# HARMFUL BACTERIA NOT ONLY GROWS EXPONENTIALLY BUT THRIVES PRACTICALLY ANYWHERE.

 Duralam Board will keep your environment clean!



Invisible to the naked eye, these harmful bacteria are on most surfaces that our hands come into contact with on a daily basis. These bacteria breach our immune system, break down defences and attack good body cells which we need to fight off illness and disease.

This is why DuraPlan has introduced the DuraLam range.

DuraLam is an Antibacterial Range of compact laminate that gives you the power to eliminate almost 99% of common bacteria. This is not only the most advanced and protective laminate in New Zealand but the world over. Now with DuraLam Antibacterial compact laminates, you can continue your healthy lifestyle knowing you have done everything you can to keep you and your loved ones protected.

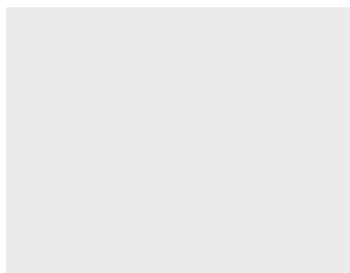
-  **EASY TO CLEAN**
-  **ANTIBACTERIAL**
-  **MOISTURE**
-  **RESISTANT GRAFFITI**
-  **RESISTANT IMPACT**
-  **RESISTANT DURABLE**



## Most Popular



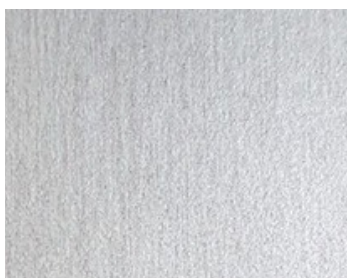
111 Designer White



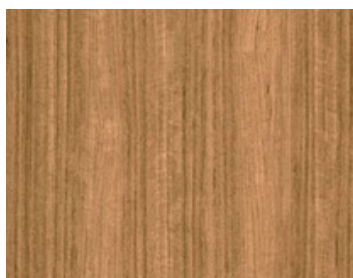
271 Light Grey



44754 Cloudy Graphite



923 Silver



10894 Teak



279 Charcoal

## Solid Colours



204 Red Apple



291 Royal Blue



259 Green Apple



149 Sheer

Actual product colours may vary from colours shown on your screen. Please feel free to request hi-res image or samples.

## Woodgrains



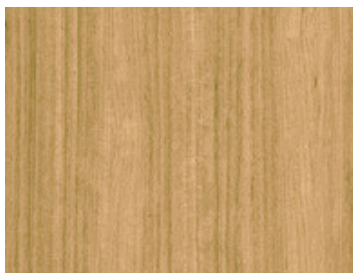
10844 Monnestry Oak



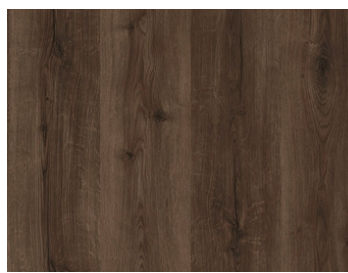
5006 Maple



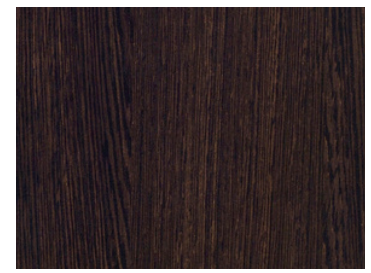
5003 Phillipine Teak



10894 Teak

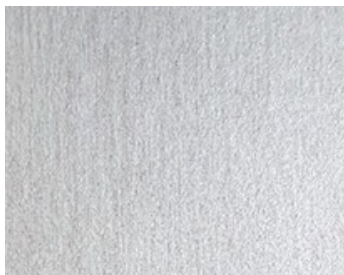


5387 Rustic Birch



10243 Straight Grained Wenge

## Textures & Patterns



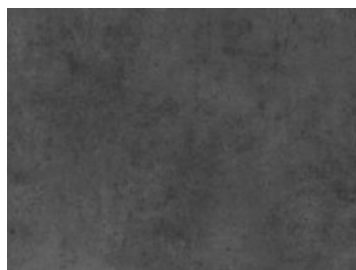
923 Silver



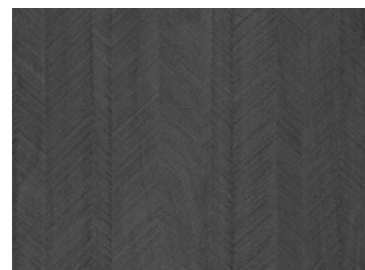
5577 Concrete



44754 Cloudy Graphite



5578 Slate



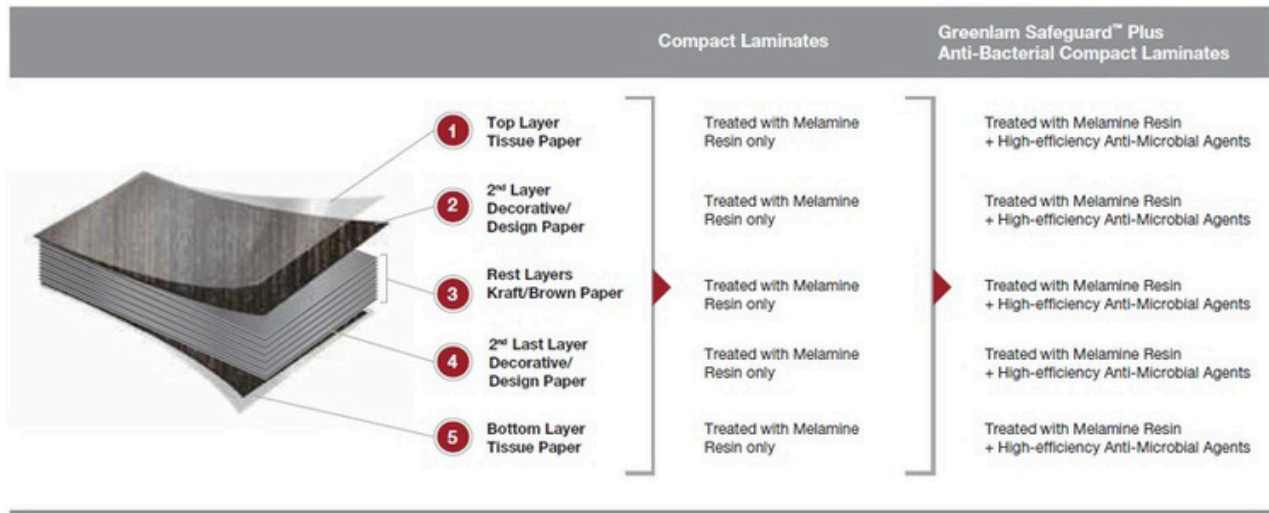
5378 Charred Chevron

Actual product colours may vary from colours shown on your screen. Please feel free to request hi-res image or samples.



# DURALAM TECHNICAL SPECIFICATIONS

## Duralam protection layer by layer breakdown



## TECHNICAL SPECIFICATION VS STANDARDS

PROPERTIES	UNIT	Specified Values As Per DIN EN 438, BSEN 438 & IS 1995 :2046	Duralam Typical Value
Thickness tolerance	mm	0.5 ± 13.0	0.28 ± 13.0
Resistance to dry heat at °180C	Grade	Not worse than 4	5
Resistance to surface wear	Rev.	350 (Min.)	400
Resistance to immersion in boiling water			
a) Mass increase	%	2.0 (Max.)	0.50
b) Thickness	%	2.0 (Max.)	0.70
c) Appearance	Grade	Not worse than 4	5
Dimensional stability at deviated temperature			
a) Longitudinal	%	0.06 (Max.)	0.03
b) Transverse	%	0.53 (Max.)	0.12
Dimensional stability at °20C			
a) Longitudinal	%	0.16 (Max.)	0.08
b) Transverse	%	0.28 (Max.)	0.13
Resistance to impact by large diameter ball			
a) Drop height	mm	1800	2000
b) Diameter of indentation	mm	10 (Max.)	2
Resistance to scratch	N	2.0 (Min.)	2.5
Resistance to staining			
a) Group 1 & 2	Grade	Not worse than 5	6
b) Group 3 & 4	Grade	Not worse than 4	5
Resistance to colour change			
a) In Xerox Arc Light	Grade	Not worse than 6	6
b) In Enclosed Carbon Arc Light	Grade	Not worse than 5	5
Resistance to cigarette burns	Grade	Not worse than 3	4
Resistance to steam	Grade	Not worse than 4	5
Resistance to crazing	Grade	Not worse than 4	5
Resistance to moisture	Grade	Not worse than 4	5
Flexural modulus	Mpa	10000 (Min.)	11000
Flexural strength	Mpa	100 (Min.)	120
Tensile strength	Mpa	70 (Min.)	90
Density	g/cm³	1.35	1.40

For enquiries, further information, pricing or placing order please contact Duraplan Systems Ltd

Phone +64 9 972 7682 | Email sales@duraplan.co.nz | Website www.duraplan.co.nz



# DuraPlan

— RESTROOMS —

## DuraLam 13mm Anti Bacterial Compact Laminate Panel

---

**Phone** +64 9 972 7682

**Address** 6 Springs Flat Road,  
PO Box 4477, Kamo 0112,  
Whangarei, New Zealand

**Email** [sales@duraplan.co.nz](mailto:sales@duraplan.co.nz)

**[www.duraplan.co.nz](http://www.duraplan.co.nz)**

---