



DURALAM 6mm Wall Panelling

Wet, Area Installation (Concrete Walls)

STEP 1

- Floor vinyl or painted wall coating system up the wall, fix vent strip on the wall at 185mm from floor (FFL)

STEP 2

- Utilizing 18mm x 40mm treated batten, install battens vertically full height with fixing at every 350-400mm, with battens positioned at 600mm centres
- Ensure walls are flush – packing and/or planning may be required
- The back of the batten will need to be checked out at the base to allow for the vent strip and vinyl
- Use Countersunk Stainless Screws into raw plugs to ensure batten is held firmly

STEP 3

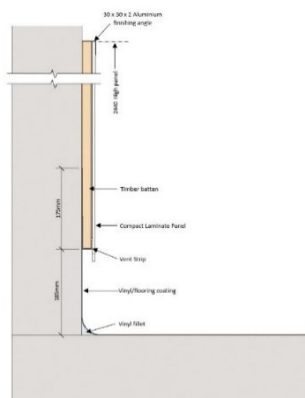
- Fix in place first piece of aluminium extrusion profile.

STEP 4

- Dry fit each sheet to ensure it fits prior to fixing on adhesive
- Compact Laminate can be cut using a rail saw/skill-saw with a fine tipped tungsten blade

STEP 5

- Wipe down each batten to ensure free from dust, maybe required to apply activator/cleaner to ensure maximum bond.



STEP 6

- Apply full height stripe of double-sided tape on the side/edge of each batten

STEP 7

- Apply a continuous 5mm bead of adhesive : Ensure bead is clear of the edge of the tape, as it may prevent the panel from bonding to the tape.

STEP 8

- Ensure to apply continuous bead of sealant behind the aluminium at the internal corner junction.

STEP 9

- Wipe down the back of the panel where it will be in contact with the tape and adhesive : use activator on a clean cloth and ensure to replace the cloth as necessary

STEP 10

- Fit sheet – ensure straight and flush positioning on the wall and allow a 2-3mm expansion clearance between profiles and panel edge. Apply pressure on the panel so that the double-sided tape bonds and holds the sheet while the glue sets

STEP 11

- Fix next profile and continue

