



## DURALAM 6mm Wall Panelling

### Wet Area Installation (Timber Framed Walls)

#### STEP 1

- Floor vinyl or painted wall coating system up the wall, fix vent strip on the wall at 185mm from floor (FFL)

#### STEP 2

- Cove floor vinyl or floor coating system 260mm up the wall, fix vent strip on to the wall at 185mm from the floor.

#### STEP 3

- Staple fix building paper on to studs overlapping the vent strip.

#### STEP 4

- Fix 18 x 40mm treated battens vertically, the full length of the sheet, fix every 400mm at 600mm centres
- Ensure walls are flush – packing and/or planing may be required
- The back of the batten will need to be checked out at the base to allow for the vent strip and vinyl.

#### STEP 5

- Fix in place, first piece of aluminium extrusion profile.

#### STEP 6

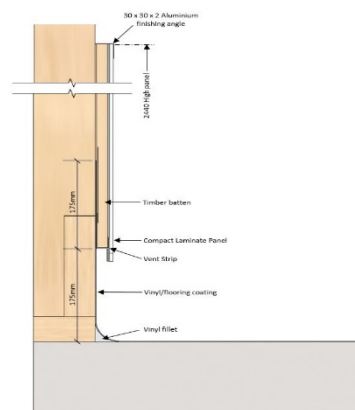
- Dry Fit each sheet to ensure it fits prior to fixing adhesive.
- Compact Laminate can be cut using fine tipped Tungsten tooling.

#### STEP 7

- Wipe down each batten to ensure free from dust and debris, maybe required to apply activator/cleaner to ensure maximum bond.

#### STEP 8

- Apply full height stripe of double-sided tape on the side/edge of each batten.



#### STEP 9

- Apply a continuous 5mm bead of adhesive - Ensure bead is clear of the edge of the tape, as it may prevent the panel from bonding to the tape.

#### STEP 10

- Ensure to apply continuous bead of sealant behind the aluminium at the internal corner junction.

#### STEP 11

- Wipe down the back of the panel where it will be in contact with the tape and adhesive : use activator on a clean cloth and ensure to replace the cloth as necessary

#### STEP 12

- Fit sheet – ensure straight and flush positioning on the wall and allow a 2-3mm expansion clearance between profiles and panel edge. Apply pressure on the panel so that the double-sided tape bonds and holds the sheet while the glue sets

#### STEP 13

- Fix next profile and continue

