



**DuraPlan**

— RESTROOMS —

# City Trim Range

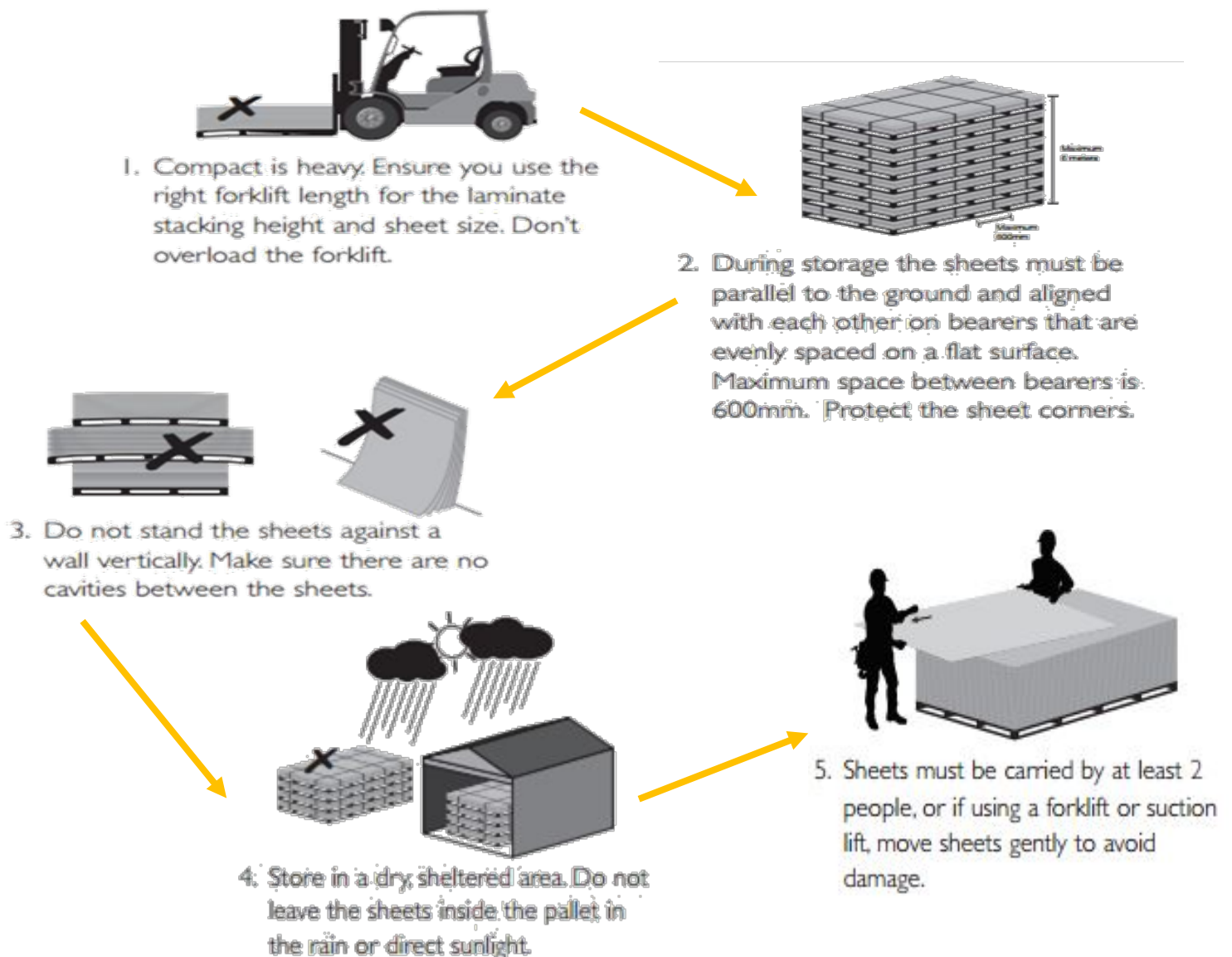
## Installation Guide | 2020

# CAUTION

## Handle Panels with Care

Compact Laminate or CDF panels are very dense and durable panels, however if they are mistreated, stored or handled incorrectly it could potentially damage the panels. To prevent any damage please read and take notice of the following diagrams:

## Storage & Handling Conditions



## **Cleaning & Maintenance of Duralam Panels**

Compact Laminate has a non-porous surface which is easy to clean. The decorative and homogenous core of the Duralam Compact Laminate Panels are impervious and resistant to most commonly used cleaning agents and disinfectants.

### **Recommended Cleaning Products:**

Ajax Spray & Wipe  
Water & Soap PL

### **Removing Extreme Soiling:**

Extreme soiling such as dust, dirt, food, juice etc that has accumulated over time should be removed following the process outlined below:

Apply hot water and an interiors detergent or soap based cleaning agent, applied with a sponge or soft nylon brush. Apply the diluted cleaning agent to the surface and leave it to soak for a period of time. Then rinse off with clean water and dry with an absorbent cloth.

### **Don't Use:**

- Any highly acidic or alkaline products should be refrained from being used
- Abrasive or polishing materials.
- Sandpaper or any other coarse material

### **Other Useful Tips:**

If any chemical solution has been applied to the board, it should be washed off in order protect the panels.

Apply CRC to hinges and door locks when required in order to free up and smoothen the movements.

For further information, please contact our customer service team on: **09 972 7682**  
or email us at: [sales@duraplan.co.nz](mailto:sales@duraplan.co.nz)

### What Tools are needed?

- Straight edge
- Level
- Drop saw
- Small step ladder
- Timber blocks and packers
- Drill
- Nylon Hammer
- Circular saw
- No. 1 & 2 Square Drive and Pozi-drive
- Broom
- Small Brush & Shovel

### Materials Supplied by Duraplan

- 13mm compact laminate
- Aluminium components
- Hardware
- Fixings

**Note 1:** Other power tools such as planner, multi-tool, jig-saw and sander may be needed.

**Note 2:** Other general hand tools such as squares and levels are advised to be on site as they may also be required.

**Note 3:** If other supplies are necessary such as drill bits and double sided tape they will be provided by Duraplan as part of the main package.

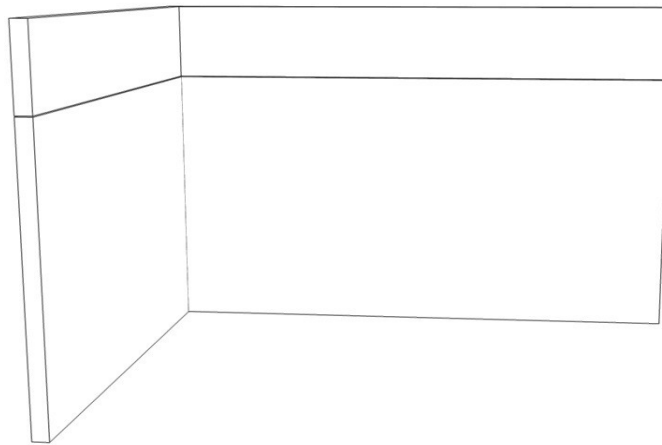
**All Installation Instruction must be thoroughly read and understand before the installation process begins:**

- All walls must be straight, square and flush.
- The system should be dry-fitted
- All holes must be pre-drilled using a 4.1mm drill bit
- These installation instructions must be followed in conjunction with the installation plans provided
- Refer to the photo galley near the end for reference and further guidance

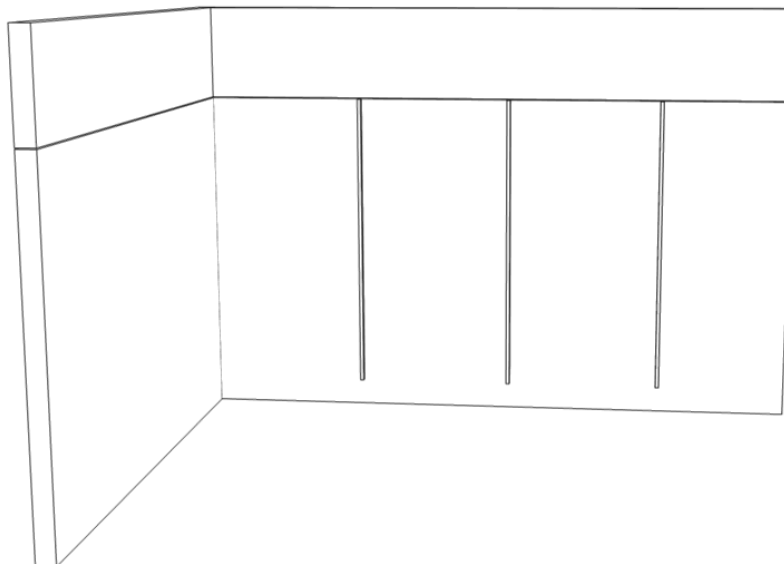
## **Installation Process**

**Step 1.** Report to the site office for site induction. Check the area where you are to work for quality of safety. Once the area is safe, proceed with the install.

**Step 2.** Open the packages and find related plans. Check colours, style and measurements.

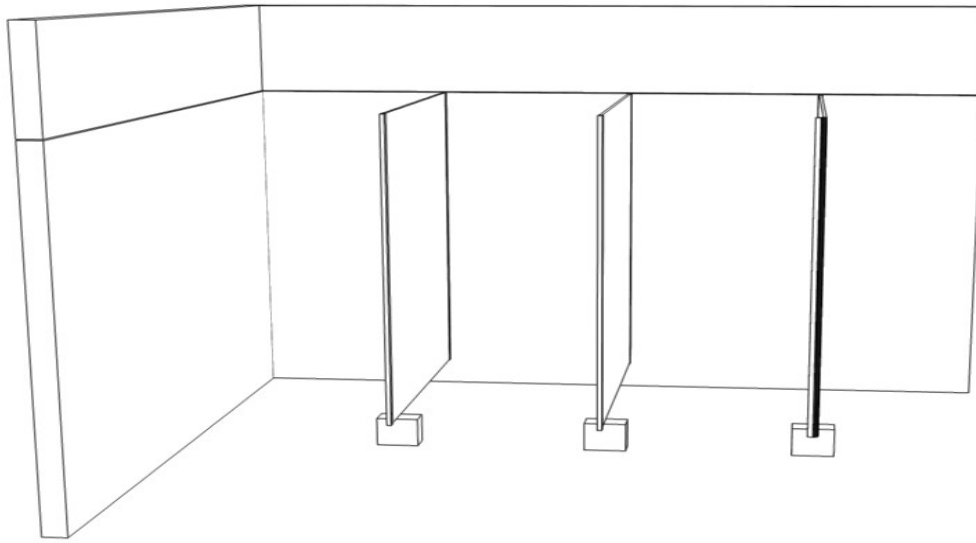


**Step 3.** Check the levels and find the highest point. Mark horizontal levels and wall channel positions

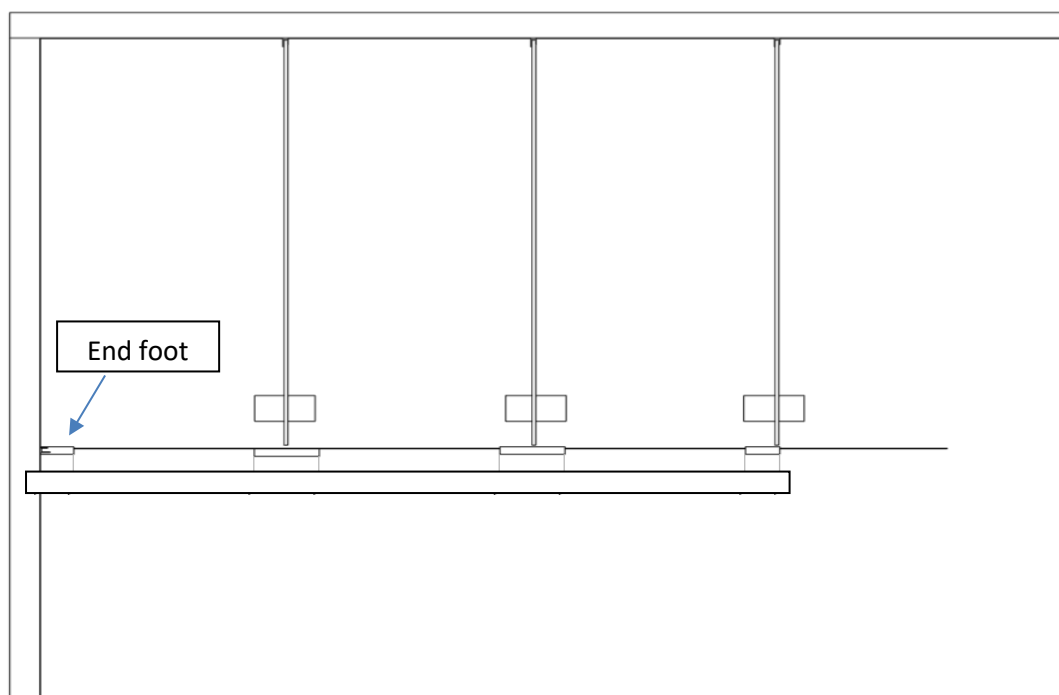


**Step 4a.** Mark out and fix wall channels in a plumb position as per installation plan measurements. Use stainless square drive 10 x 1 ½ inch screws (supplied) for fixing the wall channels to the wall.

**Note:** It is a good idea to find out the plumbing routes in the wall first.



- b.** Lift centre panels into place, slide it into the wall channel.
- c.** Level the panel using blocks/packers to the correct height to a position to support the centre panels.
- d.** Check the panel is in the correct position i.e. level, plumb, straight
- e.** MAKE SURE ALL HOLES ARE DRILLED THE ENTIRE DEPTH OF THE SCREW. Drill a 4.1mm hole in the compact where the 5mm hole is in the wall channel. DO NOT DRILL RIGHT THROUGH TO THE OTHER SIDE OF THE WALL CHANNEL.
- f.** Screw the panel to the wall channel using 10 x ½ stub screws (supplied)



**Step 5a.** Mark out the foot base positions as per the installation plans. Note that each project has its own unique measurements. Note the measurement from the straight front line of the centre panels to the position of the back face of the front pilaster is 6mm minimum.

**b.** Mark out the positions for the fixing holes. For concrete use 8mm masonry drill bit. Take extra care in ensuring accuracy of the positions of the holes. Suggestion – drill a small 3mm hole first to help guide the larger 8mm drill into the correct position

**c.** Bolt in place using 60mm x 8mm bolts (supplied)

**d.** Trim the end foot in order to ensure that the end pilasters are even

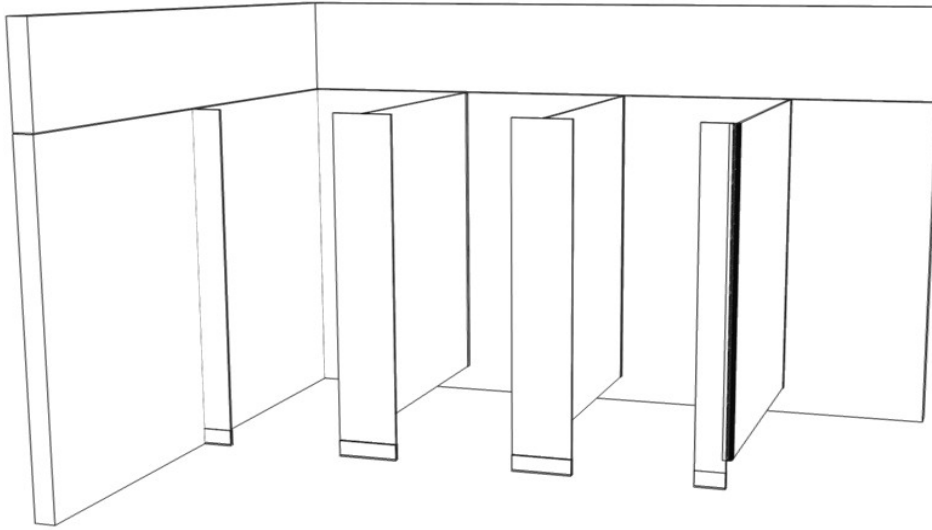
**Step 6.** Fit side/end wall channels in place at correct height in relation to the 'city trim' foot. Use 10 x 1 ½ stainless screws (supplied)

**Step 7.** Fit end pilaster to channel and foot. The panel may need to be trimmed up. Start at the end which the door hinges from. Screw the pilaster into the wall channel using 4.1mm drill and 10 x ½ screws and use the 4.1mm drill supplied for drilling and screwing into the foot bases. Use 10 x ¾ screws only in the top holes of the foot. (The lower holes have a roll pin fitted once all adjustments have been made)

**Step 8a.** Check door gaps as proceeding. Fit centre pilaster in place. They need to be placed level and plum in the base of the foot. (Note – check that the end caps for the foot bases will fit correctly. Ensure that the pilaster is not holding the cap apart from the foot base. Make any adjustments it required, otherwise move onto the next part b of step 8).

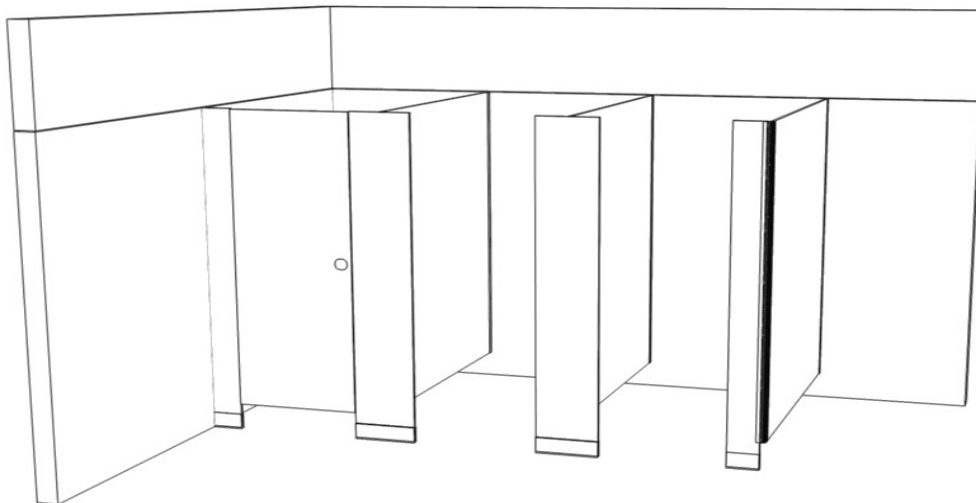
**b.** Screw in place. While doing this ensure that the pilasters remain plum, level and in the correct forward and back position. Use 10 ½ screws for the channels and 10 ¾ screws for the foot base.

c. Remove the support blocks



**Step 9a.** Fit doors from left to right/right to left using the screws supplied as marked for door hinges.

**b.** Fix the gravity self-closing hinges to the top position of the pilasters



**Step 10.** Fix the door stops/coat hooks in position.



**Step 11.** Ensure that all adjustments are complete - Check all locks and keepers are in the correct positions for height, level, plumb and straight.

**b.** Drill the feet for roll pins (lower holes) using 4.9mm drill bit. Drive in roll pins to make rigid. See below:



**Step 12.** Fit top centre panel brackets. Drill centre panel with 8.5mm drill. Bolt brackets in place. Predrill - using 5mm drill - the front bracket holes to the pilaster and screw in place with 10.5mm euro screws. See image below of the bracket:



**Step 13a.** Fit end caps to the foot bases.

**b.** Dry fit – dry fit the end caps to the foot bases and ensure that the pilaster is not holding the end cap apart from the foot base.

c. With the silkaflex supplied, place some glue on the foot base where the location lugs fit into the foot.

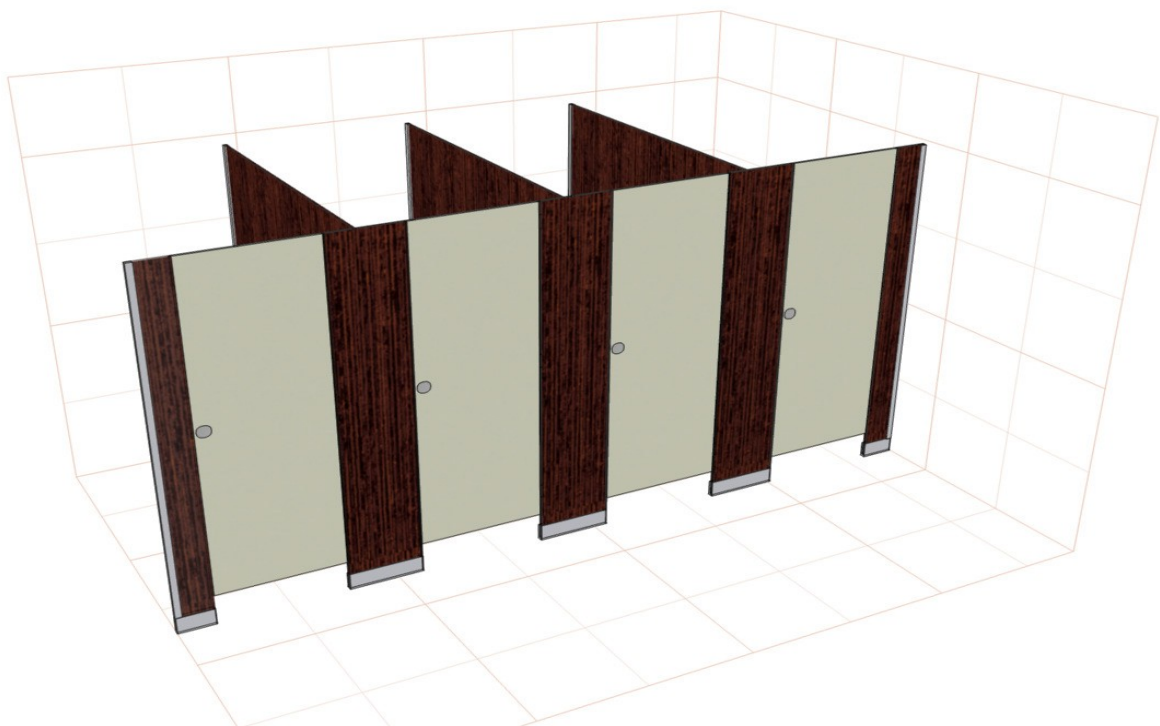
d. Fit end cap in place and remove excess with mineral turps.

e. Some tape (masking tape) may be needed to hold the end cap in place temporally while the glue sets.

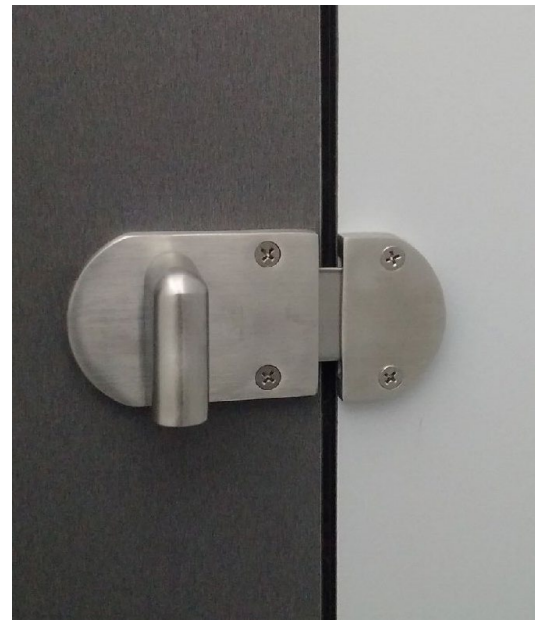
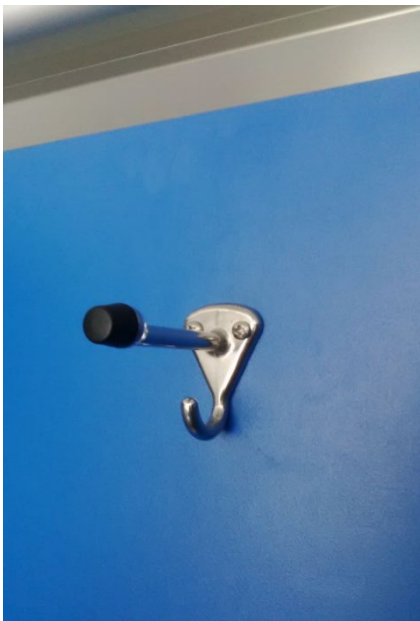
**Step 14. Final check off – ensure**

- Doors are sitting correctly and open/shut correctly
- Rebated lines are parallel
- Pilasters are fixed correctly
- All feet are correctly fixed to the floor
- All panels are straight and level
- That there is an even flush front finish to the face of the partitions
- That the mechanics of the system operate smoothly and correctly.
- Do a complete check of all hardware and screws to ensure they are fully fixed and complete
- Take off all panel and foot labels, clean all components, including any pencil marks on the walls for floors. Sweep out the room and dispose of any rubbish and wipe the system/panels clean.

**Photo Gallery:**







For further information, please contact our customer service team on: **09 972 7682**  
or email us at: [sales@duraplan.co.nz](mailto:sales@duraplan.co.nz)