



DuraPlan
— RESTROOMS —



TECHNICAL GUIDE

Senator Range

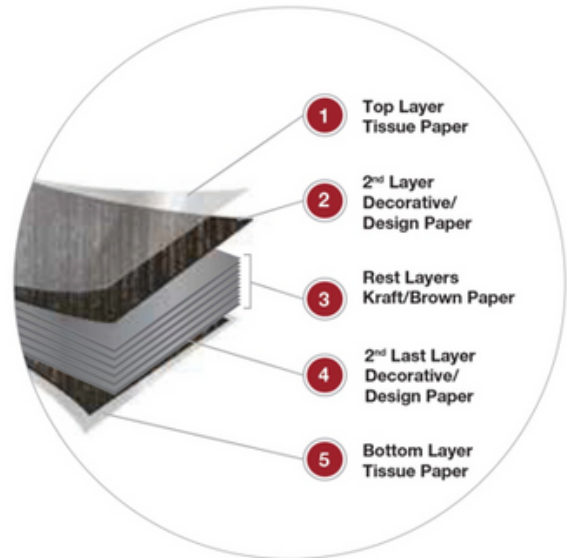
Perfectly suited for high use,
top-end restroom facilities.

09 972 7682
sales@duraplan.co.nz
www.duraplan.co.nz

Resistant to : Impact, Moisture, Wear & Graffiti

| SYSTEM INFORMATION

- 13mm compact laminate panels which are anti-bacterial, impact, moisture, wear and graffiti resistant, easy to clean/keep clean and have a 10-year panel integrity
- Solid Aluminium foot base/Pilaster Base. Spans the width of the pilasters
- Full length wall U-Channels at intersecting wall junctions
- Clean, flush front façade with no aluminium edging - clean rebated doors & pilasters
- Oval shaped aluminium channel headrail
- Simplified Installation process
- Quality brushed stainless indicator locks, coat hooks & hinges



| PANEL INFORMATION

- Available in standard 13mm thickness
- 13mm resin bonded core, Compact Laminate tested to IS EN 438-4
- Resistance too: Impact, Moisture, Wear & Graffiti
- Antibacterial - JIS 2 2801: Antibacterial Properties that actively destroy 99% of all common bacteria's
- Fire protection - NZBC C/AS2 - AS7
- Duralam Compact Laminate Panels are sourced from an ISO 9001, ISO 14001 and OHSAS 18001 approved and FSC certified company
- We offer a 10 year guarantee on panel integrity
- Duralam Compact Laminate Panels are certified for low chemical emissions and are all Greenguard certified

| ALUMINIUM INFORMATION

- **HEAD RAIL:** Oval 60mm x 33mm Extruded Aluminium alloy 6060 with exposed face with anodised or powder coated finish head rail.
- **HEAD RAIL/POST:** Square 40mm x 40mm Extruded Aluminium alloy 6060 with exposed face with anodised or powder coated finish head rail.
- **WALL CHANNEL:** 13mm x 30mm x 25mm Extruded Aluminium alloy 6060 with exposed face with anodised or powder coated finish wall channel.
- **COLOUR OPTIONS:**
 - Silver Anodised (Standard)
 - Black Anodised
 - Powder Coated (Colours from the Dulux Range)

| PANEL COLOUR OPTIONS

The Senator Range is available in:

- DuraLam Panel Colour Range - stocked & Extended Range
- Laminex Colour Range

| PANEL FINISH OPTIONS

The Compact Laminate Panel Finish is available in:

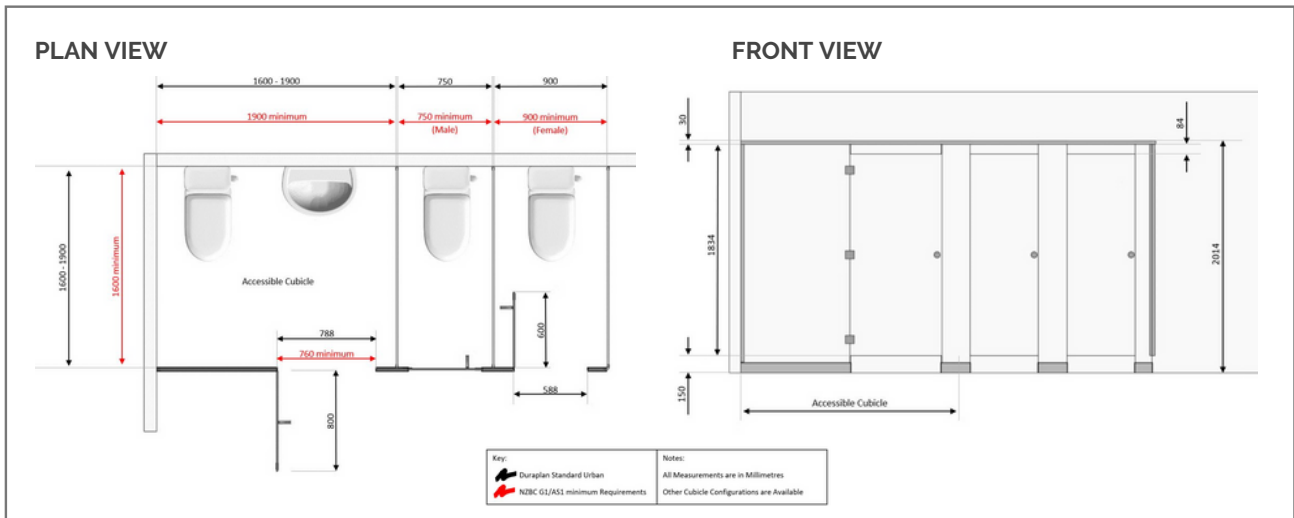
- Suede (Standard)
- Finguard (Anti-fingerprint)
- Gloss
- Decorative

| WARRANTY DETAILS

Our Standard Warranties are:

- 10 Years on Panel Integrity
- 2 Years on Hardware
- 2 Years on Installation

Resistant to : Impact, Moisture, Wear & Graffiti



| HARDWARE INFORMATION

FINISH:

- Quality and solid stainless hardware
- Black Powder Coated

MOUNTING:

- Concealed Screw Fix
- Surface Mounted

FEATURES:

- Quality indicator locks, coat hooks & hinges
- Robust & Durable Fittings
- Door opening or closing is spring assisted
- Fully Adjustable Spring Hinges to suit door
- Can be set to Hold Open / Hold Closed
- We offer a 2 Year Hardware Warranty
- Disabled Lock Option

| DURAPLAN 100 SERIES



| DURAPLAN 200 SERIES



| DIMENSION DETAILS

Duraplan Cubicle Partitions are customised to fit your measurements, depths and widths can be varied to suit. The Senator Range standard dimensions are:

- Height 2000mm with 150mm floor clearance
- Depth 1600mm-1830mm
- Standard Cubicle Doors are 600mm
- Open-in door option is recommended for standard cubicles
- Accessible /Disabled Cubicles:
 - 1900 x 1600mm (Toilet & Basin)
 - 2100 x 1900mm (Toilet, Shower & Basin)
 - 788 mm Doors - Swing Hinge or sliding doors

| WARRANTY DETAILS

- 10 Years on Panel Integrity
- 2 Years on Hardware
- 2 Years on Installation

Please contact us for Colour Samples or for further product information & details.

WWW.DURAPLAN.CO.NZ

Contact the Restroom Specialists today for all product enquiries or to request a free consultation. Simply scan this QR Code to get immediate access to this products web page.
sales@duraplan.co.nz | 09 972 7682
www.duraplan.co.nz

